

Στρατής Μηνακάκης | Stratis Minakakis

Χειμερινά Τοπία | Winter Landscapes

Για πιάνο οκτώ χέρια | For piano eight hands

Λίγα λόγια για το έργο...

Αφορμή για τα “Χειμερινά Τοπία” στάθηκε μια βόλτα σε ένα χιονισμένο δάσος του Μπελμόντ στη Μασαχουσέτη. Ο αέρας που περνούσε μέσα από τα απογυμνωμένα κλαριά και τα λιγοστά μακρινά καλέσματα των πουλιών δημιουργούσαν ιδιαίτερα όμορφες και απόκοσμες αντηχήσεις στο σιωπηρό παγωμένο τοπίο.

A few words about the work...

A walk on a snowy forest in Belmont, Massachusetts, provided the prompt for “Winter Landscapes”. The air passing through the bare branches and the sparse distant birdcalls created exceptionally beautiful and otherworldly resonances in the frozen silent landscape.

...Και ένα σημείωμα για τους νέους μουσικούς, τους δασκάλους και τους ενήλικες που θα καταπιαστούν με τα “Χειμερινά Τοπία”.

Τα “Χειμερινά Τοπία” είναι ένα παιχνίδι για τέσσερις νέους μουσικούς, ο καθένας με το δικούς του, εναλασσόμενους ρόλους. Η ερμηνεία του έργου απαιτεί πολλές ώρες ομαδικής δουλειάς, ώστε ο κάθε μουσικός να ανακαλύψει τι προσφέρει στο σύνολο ανά πάσα στιγμή. Μέσα από αυτή την επίπονη διαδικασία, οι νέοι μουσικοί θα μάθουν να ακούν και να συμπληρώνουν ο ένας τον άλλον, ανακαλύπτοντας καινούριους ήχους και δυνατότητες για το υπέροχο αυτό όργανο.

...And a note to the young musicians, their teachers and adults that will be engaged in “Winter Landscapes”.

“Winter Landscapes” is a game for four young musicians, each one with their own, varied roles. The performance of the work requires many hours of team work, so that each musician may discover what they contribute to the ensemble at each particular moment. Through this painstaking process, young musicians will learn how to listen and complete each other, discovering new sounds and possibilities for this magnificent instrument.

Σημειώσεις για τους εκτελεστές | Notes to the performers

Κλειδιά | Clefs

Μαζί με τα παραδοσιακά κλειδιά του Σολ και Φα, το έργο “Χειμερινά Τοπία” χρησιμοποιεί τα ακόλουθα τρία κλειδιά:

In addition to the traditional treble and bass clefs, “Winter Landscapes” uses the following three clefs:

(Για το Πιάνο 1 | For Piano 1)



Παίξε τις νότες μια οκτάβα οξύτερα από τις αντίστοιχες νότες στο σύνηθες κλειδί του Σολ. Πρόσεξε πως όταν αυτό το κλειδί συνδιάζεται με την ένδειξη “*8va”, παίζεις δύο οκτάβες οξύτερα απ’ότι στο σύνηθες κλειδί του Σολ.

Play notes an octave higher than the corresponding notes in regular treble clef. Note that when this clef is combined with the “*8va” indication, you play two octaves higher than in the regular treble clef.

(Για το Πιάνο 4 | For Piano 4)



Παίξε τις νότες μια οκτάβα βαρύτερα από τις αντίστοιχες νότες στο σύνηθες κλειδί του Φα. Play notes an octave lower than the corresponding notes in regular bass clef.

(Για τα Πιάνα 2, 3 και 4. | For Pianos 2, 3, and 4.)



Η ένδειξη “TAB” αναφέρεται στον αγγλικό όρο tablature. Στη συγκεκριμένη περίπτωση απεικονίζει την κίνηση που πρέπει να κάνεις με το χέρι σου και όχι το ηχητικό αποτέλεσμα. Αυτό το κλειδί χρησιμοποιείται για να δείξει ποια “πλήκτρα κλάστερ” πρέπει να πιέσεις. Η πάνω γραμμή δείχνει το ψηλότερο “πλήκτρο κλάστερ”, η μεσαία γραμμή το μεσαίο και η χαμηλότερη το χαμηλότερο.

The indication “TAB” stands for tablature. In this case, it depicts the motion you must do with your hand and not the resulting sound. This clef is used to indicate which “cluster keys” must be pressed. The top line stands for the highest “cluster key”, the middle for the middle, and the lowest for the lowest.

“Πλήκτρα Κλάστερ (συμπλέγματος)” | “Cluster Keys”

(Για τα Πιάνα 2, 3 και 4. | For Pianos 2, 3, and 4.)

Πάρε τρία μολύβια με ραβδώσεις. Τα δύο πρέπει να είναι μακριά, περίπου στην έκταση μιας οκτάβας. Το τρίο πρέπει να είναι κοντότερο, περίπου στην έκταση μιας πέμπτης.

Take three ridged pencils. Two of the pencils should be long, spanning the length of approximately an octave. The third pencil should be shorter, spanning the length of approximately a fifth.

Πιάνο 4: με την ένδειξη “cluster keys on” τοποθέτησε το κοντό μολύβι μεταξύ του Λα#1 και του Ρε#2, το πρώτο μακρύ μολύβι μεταξύ του Ρε1 και του Ρε2 και το δεύτερο μεταξύ του Σολ#1 και του Σολ#2, όπως στην ακόλουθη εικόνα. Με την ένδειξη “cluster keys off”, αφάιρесе τα “πλήκτρα κλάστερ” από το πιάνο και τοποθέτησέ τα στο αναλόγιο.

Piano 4: on the indication “cluster keys on”, place the short pencil between A#1 and D#2, the first long one between D1 and D2, and the second one between G#1 and G#2, as in the following picture. With the indication “cluster keys off”, remove the “cluster keys” from the piano and place them on the stand.



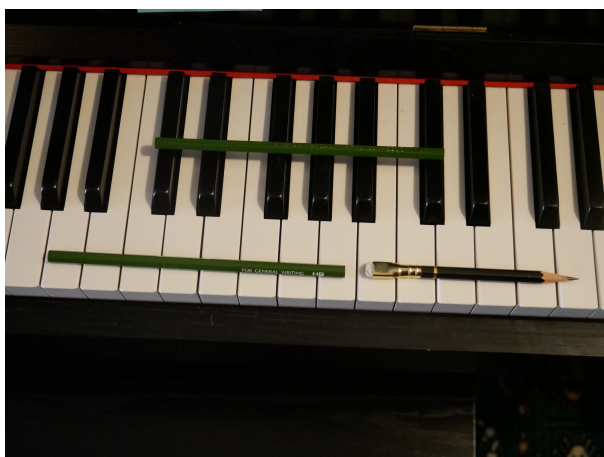
Πιάνο 3: με την ένδειξη “cluster keys on” τοποθέτησε το κοντό μολύβι μεταξύ του Ντο#3 και του Σολ#3, το πρώτο μακρύ μολύβι μεταξύ του Μι3 και του Μι4 και το δεύτερο μεταξύ του Λα#3 και του Λα#4, όπως στην ακόλουθη εικόνα. Με την ένδειξη “cluster keys off”, αφάιρесе τα “πλήκτρα κλάστερ” από το πιάνο και τοποθέτησέ τα στο αναλόγιο.

Piano 3: on the indication “cluster keys on”, place the short pencil between C#3 and G#3, the first long one between E3 and E4, and the second one between A#3 and A#4, as in the following picture. With the indication “cluster keys off”, remove the “cluster keys” from the piano and place them on the stand.



Πιάνο 2: με την ένδειξη “cluster keys on” τοποθέτησε το πρώτο μακρύ μολύβι μεταξύ του Λα4 και του Λα5, το δεύτερο μακρύ μολύβι μεταξύ του Ντο#5 και του Ντο#6 και το κοντό μολύβι μεταξύ του Σι5 και του Φα6, όπως στην ακόλουθη εικόνα. Με την ένδειξη “cluster keys off”, αφάιρεσε τα “πλήκτρα κλάστερ” από το πιάνο και τοποθέτησέ τα στο αναλόγιο.

Piano 2: on the indication “cluster keys on”, place the first long pencil between A4 and A5, the second long pencil between C#5 and C#6, and the short pencil between B5 and F6, as in the following picture. With the indication “cluster keys off”, remove the “cluster keys” from the piano and place them on the stand.



Τα μολύβια λειτουργούν ως “πλήκτρα κλάστερ”: πιέζοντάς τα κατεβαίνουν αυτόματα όλα τα πλήκτρα που είναι από κάτω τους. Πιέσε τα “πλήκτρα κλάστερ” στο κέντρο του αντίστοιχου μολυβιού. Η πίεση που ασκείς πρέπει να είναι απαλή, ώστε τα πλήκτρα του πιάνου να κατεβαίνουν αθόρυβα. Δες τις ακόλουθες φωτογραφίες.

The pencils work as “cluster keys”: pressing them automatically lowers all the piano keys below them. Press the “cluster keys” down the middle of the corresponding pencil. The pressure you use must be soft, so that the keys will be lowered silently. See the pictures below.



Όταν πιεστούν, τα “πλήκτρα κλάστερ” αντηχούν τις νότες που παίζονται κατά το συνήθη τρόπο.

Once depressed, “cluster keys” resonate the notes played in the usual manner.

Ειδικοί χαρακτήρες | Special symbols

□

(Μόνο για τα “πλήκτρα κλάστερ | “Cluster keys” only.)

Πίεσε το “πλήκτρο κλάστερ” αθόρυβα, χωρίς να παράξεις ήχο.

Depress the “cluster key” silently, without producing a sound.



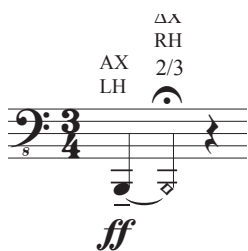
Ρυθμική σημειογραφία για τα “πλήκτρα κλάστερ”: οι κάθετες γραμμές αντιπροσωπεύουν κτύπους και οι παχιές οριζόντιες γραμμές διάρκεια. Στο παραπάνω παράδειγμα, πίεσε αθόρυβα το ψηλότερο κλειδί, κράτησέ του για τέσσερις κτύπους και μετά πίεσε το χαμηλότερο κλειδί και κράτησέ το για δύο κτύπους.

Rhythmic notation for “cluster keys”: vertical lines represent beats and thick horizontal lines represent duration. In the example above, depress silently the highest key, hold for four beats, and then depress the lowest key and hold for two beats.

◇

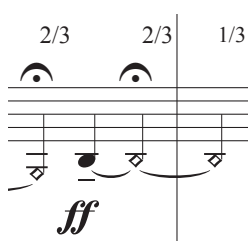
(Πιάνο 4 | Piano 4)

Πίεσε το πλήκτρο (όχι το “πλήκτρο κλάστερ”) αθόρυβα.
Depress key (not a “cluster key”) silently.



Πίεσε το πρώτο πλήκτρο με το αριστερό χέρι. Χρησιμοποιώντας το δεξί, σταμάτησε την επιστροφή του πλήκτρου στα 2/3 της πορείας. Δες την ακόλουθη φωτογραφία.

Press the first key with the left hand. Using the right hand, stop the key release 2/3 of the way. See picture below.



Μια παραλλαγή της προηγούμενης μουσικής χειρονομίας· χρησιμοποίησε το δεξί χέρι για να σταματήσεις την επιστροφή του πλήκτρου στα 2/3 της πορείας. Έπειτα ανέβασε το πλήκτρο λίγο ακόμα, ώστε το πλήκτρο να σταματήσει στο 1/3 της πορείας.

A variant of the previous gesture; use the right hand to stop the key release 2/3 of the way. Then raise the right hand a little more, so that the key is stopped 1/3 of the way.

Σταματώντας την επιστροφή του πλήκτρου στη χαμηλή περιοχή του οργάνου δημιουργεί μια ιδιαίτερη αντήχηση των υψηλότερων συστατικών του ήχου.

Stopping the release of the key in the low register of the piano creates a special resonance of the highest components of the sound.

*Ped.*_____

(Πιάνο 3 | Piano 3)

Πίεσε το αρμονικό πεντάλ στο ενδεδειγμένο σημείο και κράτησέ το όσο ορίζει η οριζόντια γραμμή. Αν δεν υπάρχει οριζόντια γραμμή δίπλα στην ένδειξη *Ped.*, κράτησε το πεντάλ μόνο για έναν κτύπο.

Press the sustain pedal at the indicated point and hold as long as the horizontal line indicates. If there is no horizontal line attached to the *Ped.* indication, sustain the pedal for only one beat.

ff-p

Fortissimo που ακολουθείται αμέσως από *piano*.

Fortissimo followed immediately by *piano*.

Γενικές οδηγίες | General instructions

- Για τις πρόβες και την εκτέλεση το έργου θα χρειαστούν δύο πάγκοι ή τέσσερα μικρά σκαμπό.
- Ο μουσικός που παίζει την πάρτα του Πιάνο 3 θα πρέπει να καθίσει σε θέση που έχει εύκολη πρόσβαση στο πεντάλ.
- Θα χρειαστούν επίσης δύο παρτιτούρες όλου του έργου, μία για τα Πιάνα 1 και 2 και μία για τα Πιάνα 3 και 4, τυπωμένες σε χαρτί A3. Λόγω της φύσης του έργου, η λύση να παίξει ο κάθε μουσικός από τη δική του πάρτα δεν προκρίνεται.
- Κάθε μουσικός πρέπει να χρησιμοποιήσει έναν ιδιαίτερο κωδικό χρώματος για το δικό του μέρος.
- Στην εκτέλεση του έργου, είναι καλή ιδέα να υπάρχουν δύο ενήλικες που θα γυρνούν τις σελίδες.
- For the rehearsals and performance of the work, you will need two piano benches or four small piano seats.
- The musician playing the Piano 3 part must seat in a manner that gives them easy access to the pedal.
- You will also need two scores of the entire work, one for Pianos 1 and 2, and one for Pianos 3 and 4, printed on A3 paper. Because of the nature of the work, the solution of playing from individual parts is not advisable.
- Each musician should use a unique color code for their own part.
- During the performance, it is a good idea to have two adults to turn pages.

ΧΕΙΜΕΡΙΝΑ ΤΟΠΙΑ • WINTER LANDSCAPES

για πιάνο 8 χέρια • for piano 8 hands

I.

Largo (♩ c. 48) 2 3 4 5 6 7 8
quasi legato

Piano 1.

Στο πρώτο μέρος, το πιάνο 4 δίνει σήμα στους άλλους στο τέλος της κορώνας με ένα νεύμα του κεφαλιού.
 In the first part, piano 4 cues others at the end of the fermata with a nod of the head.

Largo (♩ c. 48)
quasi legato

Piano 2.

Στο πρώτο μέρος, το πιάνο 4 δίνει σήμα στους άλλους στο τέλος της κορώνας με ένα νεύμα του κεφαλιού.
 In the first part, piano 4 cues others at the end of the fermata with a nod of the head.

Largo (♩ c. 48)

Piano 3.

"Cluster keys" on.

Στο πρώτο μέρος, το πιάνο 4 δίνει σήμα στους άλλους στο τέλος της κορώνας με ένα νεύμα του κεφαλιού.
 In the first part, piano 4 cues others at the end of the fermata with a nod of the head.

Largo (♩ c. 48)

Piano 4.

ΔX RH
 AX 2/3
 LH

ff p ff ff p ff ff

Στο πρώτο μέρος, το πιάνο 4 δίνει σήμα στους άλλους στο τέλος της κορώνας με ένα νεύμα του κεφαλιού.
 In the first part, piano 4 cues others at the end of the fermata with a nod of the head.

II.

Adagio - poco piu mosso

(♩ c. 68)

9 *quasi legato* 10 11 12 13 14 15

Pno. 1

Musical score for Pno. 1, measures 9-15. The score consists of two staves. The upper staff is in treble clef and contains a melodic line with notes and rests. The lower staff is in bass clef and contains a supporting line with chords and notes. The dynamic marking *ppp* is present at the beginning of the first measure.

Pno. 2

Musical score for Pno. 2, measures 9-15. The score consists of two staves. The upper staff is in treble clef and contains a melodic line with notes and rests. The lower staff is in bass clef and contains a supporting line with chords and notes. The dynamic marking *ppp* is present at the beginning of the first measure. The text *quasi legato* is written above the first measure.

Pno. 3

Musical score for Pno. 3, measures 9-15. The score consists of two staves. The upper staff is in treble clef and contains a melodic line with notes and rests. The lower staff is in bass clef and contains a supporting line with chords and notes. The dynamic marking *ppp* is present at the beginning of the first measure.

Pno. 4

Musical score for Pno. 4, measures 9-15. The score consists of two staves. The upper staff is in bass clef and contains a melodic line with notes and rests. The lower staff is in bass clef and contains a supporting line with notes and rests. The dynamic marking *p* is present at the beginning of the first measure, and *ff* is used in subsequent measures. The text ΔX RH $\frac{2}{3}$ is written above the notes in measures 12, 13, and 14.

16 17 18 19 20

Pno. 1

Pno. 2

T
A
B

Pno. 3

T
A
B

AX
LH
2/3

p — *ff*

Pno. 4

T
A
B

Detailed description of the musical score: The score is for four piano parts (Pno. 1-4) across five measures (16-20). Pno. 1 and 2 are in treble clef. Pno. 3 is a grand staff with treble and bass clefs. Pno. 4 is in bass clef. Measure 16: Pno. 1 has notes G4, A4, B4 (accented), C5. Pno. 2 has notes G4, A4, B4, C5. Pno. 3 has rests. Pno. 4 has notes G3, A3, B3, C4. Measure 17: Pno. 1 has notes G4, A4, B4 (accented), C5. Pno. 2 has notes G4, A4, B4, C5. Pno. 3 has rests. Pno. 4 has notes G3, A3, B3, C4. Measure 18: Pno. 1 has rests. Pno. 2 has rests. Pno. 3 has rests. Pno. 4 has rests. Measure 19: Pno. 1 has rests. Pno. 2 has rests. Pno. 3 has rests. Pno. 4 has rests. Measure 20: Pno. 1 has rests. Pno. 2 has rests. Pno. 3 has rests. Pno. 4 has rests. Performance instructions include 'AX LH 2/3' above Pno. 4 and dynamics *p* and *ff* with a hairpin. Tablature 'T A B' is present for Pno. 2 and Pno. 4.

Andante - poco piu mosso
(♩ c. 82)

III.

21 *quasi legato* 22 23 24 25 26 27

Pno. 1

Andante - poco piu mosso
(♩ c. 82)

quasi legato

Pno. 2

Andante - poco piu mosso
(♩ c. 82)

Pno. 3

Andante - poco piu mosso
(♩ c. 82)

AX RH
LH 2/3

AX LH
RH 2/3

AX RH

Pno. 4

28

29

30

31

32

33

34

Pno. 1

Musical notation for Pno. 1, measures 28-34. The score consists of two staves. The upper staff contains the melody with dynamics *ppp* and *f*. The lower staff contains accompaniment. A crescendo hairpin is present between measures 28 and 29, and another between 33 and 34.

Pno. 2

Musical notation for Pno. 2, measures 28-34. The score consists of two staves. The upper staff contains the melody with dynamics *ppp* and *f*. The lower staff contains accompaniment. A crescendo hairpin is present between measures 28 and 29, and another between 33 and 34.

Pno. 3

Musical notation for Pno. 3, measures 28-34. The score consists of two staves. The upper staff is empty. The lower staff contains TAB notation with vertical lines and flags indicating fret positions.

Pno. 4

Musical notation for Pno. 4, measures 28-34. The score consists of two staves. The upper staff contains technical markings: AX LH 2/3, ΔX RH, AX LH, ΔX RH, AX LH, ΔX RH 2/3, and 1/3. The lower staff contains musical notation with dynamics *ppp* and *f*. A TAB staff is located below the musical notation.

35

36

37

38

39

40

41

42

Pno. 1

Pno. 2

Pno. 3

Pno. 4

Andantino - poco piu mosso
(♩ c. 92)

IV.

43 *quasi legato* 44 45 46 47 48 49 50

Pno. 1

Musical score for Pno. 1, measures 43-50. Treble clef, ppp dynamics, quasi legato marking.

Pno. 2

Musical score for Pno. 2, measures 43-50. Treble clef, ppp dynamics, quasi legato marking.

Pno. 3

Musical score for Pno. 3, measures 43-50. Treble and Bass clefs, mostly rests.

Pno. 4

Musical score for Pno. 4, measures 43-50. Bass clef, p and ff dynamics, ΔX RH markings.

51

52

53

54

55

56

57

Pno. 1

Musical score for Pno. 1, measures 51-57. Treble and bass staves. Dynamics: *f*, *ppp*. Includes an *8^{va}* marking above measure 55.

Pno. 2

Musical score for Pno. 2, measures 51-57. Treble and bass staves. Dynamics: *f*, *ppp*. Includes a TAB line below the staves.

Pno. 3

Musical score for Pno. 3, measures 51-57. Treble and bass staves. Includes a TAB line below the staves with "Led." markings.

Pno. 4

Musical score for Pno. 4, measures 51-57. Treble and bass staves. Dynamics: *ff*, *p*. Includes a TAB line below the staves.

58 59 60 61 62 63 64

Pno. 1

8^a

p *ppp*

Pno. 2

ppp

TAB

Pno. 3

TAB

Rec. _____

Pno. 4

ff *ff* *p* *ff*

ΔX RH $\frac{2}{3}$ $\frac{1}{3}$ $\frac{2}{3}$

TAB

65 66 67 68 69 70 71

Pno. 1

(8^a)

mp *mf* *f*

Pno. 2

"Cluster keys" on.

T
A
B

Pno. 3

T
A
B

_____ Ped. _____ Ped. _____

Pno. 4

ΔX
RH
2/3 1/3

"Cluster keys" on.

T
A
B

Vivace - molto piu mosso

(♩ c. 152)

V.

72 73 74 75 76 77 78 79

leggiero

Pno. 1

8^{va}

ff ff-p *ff-p* *ff-p* *ff-p* *ff-p*

8^{va}

Vivace - molto piu mosso

(♩ c. 152)

Pno. 2

Vivace - molto piu mosso

(♩ c. 152)

Pno. 3

ped. ped. ped. ped. ped. ped.

Vivace - molto piu mosso

(♩ c. 152)

Pno. 4

80 81 82 83 84 85 86

g^a

Pno. 1

ff-p *ff-p* *ff-p* *ff-p*

g^a

Pno. 2

leggiro

pppp
(sempre)

"Cluster keys" off.

TAB

Pno. 3

TAB

Leg. *Leg.* *Leg.* *Leg.*

Pno. 4

TAB

87 88 89 90 91 92 93

Pno. 1

ff-p *ff-p* *ff-p* *ff-p*

Pno. 2

TAB

Pno. 3

TAB

Pno. 4

TAB

Red. Red. Red. Red.

94 95 96 97 98 99 100

8^a

Pno. 1

ff-p

8^a

Pno. 2

TAB

leggiere

Pno. 3

pppp

leg.

"Cluster keys" off.

leg.

Pno. 4

TAB

101 102 103 104 105 106 107

Pno. 1

8^a

ff-p

Pno. 2

Pno. 3

Ped.

Pno. 4

108 109 110 111 112 113

Pno. 1

ff-p *ff-p* *ff-p*

S^a *S^a*

Pno. 2

Pno. 3

leggiero

pppp
(sempre)

"Cluster keys" off.

TAB

114 115 116 117 118 119

Piano score for Pno. 1, Pno. 2, Pno. 3, and Pno. 4, measures 114-119. The score includes dynamic markings (*ff-p*), articulation (*g^a*), and performance instructions (T, A, B, Ped.).

Pno. 1: Treble clef. Measures 114-119. Dynamic markings: *ff-p*. Articulation: *g^a*. Performance instructions: T, A, B.

Pno. 2: Treble clef. Measures 114-119. Performance instructions: T, A, B.

Pno. 3: Bass clef. Measures 114-119. Performance instructions: T, A, B, Ped.

Pno. 4: Bass clef. Measures 114-119. Performance instructions: T, A, B.

120 121 122 123 124 125

Pno. 1

8^a

ff-p

ff-p

Pno. 2

Pno. 3

Ped.

Ped.

Pno. 4

126

127

128

129

130

131

Pno. 1

Musical notation for Pno. 1, measures 126-131. The score consists of two staves: a treble staff and a bass staff. Measure 126 features a treble staff with notes G4, A4, B4, C5 and a bass staff with a whole rest. Measure 127 has a treble staff with notes B4, C5, D5, E5 and a bass staff with notes G3, A3, B3, C4. Measure 128 has a treble staff with a whole rest and a bass staff with notes D4, E4, F4, G4. Measure 129 has a treble staff with notes G4, A4, B4, C5 and a bass staff with notes G3, A3, B3, C4. Measure 130 has a treble staff with notes A4, B4, C5, D5 and a bass staff with notes D4, E4, F4, G4. Measure 131 has a treble staff with notes B4, C5, D5, E5 and a bass staff with notes G3, A3, B3, C4. Dynamic markings include *ff-p* in measures 129 and 130. An *8^a* marking is present above the treble staff in measures 126 and 127.

Pno. 2

Musical notation for Pno. 2, measures 126-131. The score consists of two staves: a treble staff and a bass staff. Measure 126 has a treble staff with notes G4, A4, B4, C5 and a bass staff with notes G3, A3, B3, C4. Measure 127 has a treble staff with notes B4, C5, D5, E5 and a bass staff with notes D4, E4, F4, G4. Measure 128 has a treble staff with a whole rest and a bass staff with notes G3, A3, B3, C4. Measure 129 has a treble staff with notes G4, A4, B4, C5 and a bass staff with notes G3, A3, B3, C4. Measure 130 has a treble staff with notes A4, B4, C5, D5 and a bass staff with notes D4, E4, F4, G4. Measure 131 has a treble staff with notes B4, C5, D5, E5 and a bass staff with notes G3, A3, B3, C4.

Pno. 3

Musical notation for Pno. 3, measures 126-131. The score consists of two staves: a treble staff and a bass staff. Measure 126 has a treble staff with notes G4, A4, B4, C5 and a bass staff with notes G3, A3, B3, C4. Measure 127 has a treble staff with notes B4, C5, D5, E5 and a bass staff with notes D4, E4, F4, G4. Measure 128 has a treble staff with a whole rest and a bass staff with notes G3, A3, B3, C4. Measure 129 has a treble staff with notes G4, A4, B4, C5 and a bass staff with notes G3, A3, B3, C4. Measure 130 has a treble staff with notes A4, B4, C5, D5 and a bass staff with notes D4, E4, F4, G4. Measure 131 has a treble staff with notes B4, C5, D5, E5 and a bass staff with notes G3, A3, B3, C4. Pedal markings (*Ped.*) are present in measures 129 and 130.

Pno. 4

Musical notation for Pno. 4, measures 126-131. The score consists of two staves: a treble staff and a bass staff. Measure 126 has a treble staff with notes G4, A4, B4, C5 and a bass staff with notes G3, A3, B3, C4. Measure 127 has a treble staff with notes B4, C5, D5, E5 and a bass staff with notes D4, E4, F4, G4. Measure 128 has a treble staff with a whole rest and a bass staff with notes G3, A3, B3, C4. Measure 129 has a treble staff with notes G4, A4, B4, C5 and a bass staff with notes G3, A3, B3, C4. Measure 130 has a treble staff with notes A4, B4, C5, D5 and a bass staff with notes D4, E4, F4, G4. Measure 131 has a treble staff with notes B4, C5, D5, E5 and a bass staff with notes G3, A3, B3, C4.

132

133

134

135

136

Pno. 1

Musical notation for Pno. 1, measures 132-136. The notation is in treble clef with a key signature of one sharp (F#). It features a series of chords and single notes. Dynamics include *ff-p* in measures 133, 134, and 136. Articulation marks include accents (>) and slurs. A dashed line labeled *8^a* spans across the top of the system.

Pno. 2

Musical notation for Pno. 2, measures 132-136. The notation is in treble clef. It features chords and single notes. A TAB line is present at the bottom of the system, with a small horizontal bar in each measure.

Pno. 3

Musical notation for Pno. 3, measures 132-136. The notation is in bass clef. It features chords and single notes. Pedal markings (*Ped.*) are present in measures 133, 134, and 136. A TAB line is present at the bottom of the system, with a small horizontal bar in each measure.

Pno. 4

Musical notation for Pno. 4, measures 132-136. The notation is in bass clef. It features chords and single notes. A TAB line is present at the bottom of the system, with a small horizontal bar in each measure.

137

138

139

140

Pno. 1

Musical notation for Pno. 1, measures 137-140. The notation is in treble clef. Measure 137 starts with a flat sign (b) and an 8va marking. Measure 139 has a forte dynamic marking (f) and an accent (>). Measure 140 has an accent (>). The notes are mostly chords and single notes with stems.

Pno. 2

Musical notation for Pno. 2, measures 137-140. The notation is in treble clef. Measure 137 has an 8va marking. Measure 139 has a flat sign (b). Measure 140 has a text box that says "Cluster keys" off. The notes are mostly chords and single notes with stems.

Pno. 3

Musical notation for Pno. 3, measures 137-140. The notation is in bass clef. Measure 137 has a flat sign (b). Measure 139 has a flat sign (b) and a sharp sign (#). Measure 140 has a flat sign (b) and a sharp sign (#). There is a text box that says "Cluster keys" on. The notes are mostly chords and single notes with stems.

Pno. 4

Musical notation for Pno. 4, measures 137-140. The notation is in bass clef. The notes are mostly chords and single notes with stems.

Allegretto - poco meno mosso

(♩ c. 112)

VI.

141

142

143

144

145

146

147

Pno. 1

sfz (sempre martellato) *sfz* (sempre)

fff *sfz*

Στο τελευταίο μέρος, το Πιάνο 1 δίνει τον παλμό και ελέγχει τις αλλαγές του.
In the last part, Piano 1 gives the tempo and controls its changes.

Allegretto - poco meno mosso

(♩ c. 112)

Pno. 2

Τα πλήκτρα "κλάστερ" αλλάζουν ταυτόχρονα με τις αττάκες "sfz" του Πιάνο 1.
The "cluster keys" changes simultaneously to the "sfz" accents of Piano 1.

Στο τελευταίο μέρος, το Πιάνο 1 δίνει τον παλμό και ελέγχει τις αλλαγές του.
In the last part, Piano 1 gives the tempo and controls its changes.

Allegretto - poco meno mosso

(♩ c. 112)

Pno. 3

Τα πλήκτρα "κλάστερ" αλλάζουν ταυτόχρονα με τις αττάκες "sfz" του Πιάνο 4.
The "cluster keys" changes simultaneously to the "sfz" accents of Piano 4.

Στο τελευταίο μέρος, το Πιάνο 1 δίνει τον παλμό και ελέγχει τις αλλαγές του.
In the last part, Piano 1 gives the tempo and controls its changes.

Allegretto - poco meno mosso

(♩ c. 112)

Pno. 4

fff (sempre martellato) *sfz*

Στο τελευταίο μέρος, το Πιάνο 1 δίνει τον παλμό και ελέγχει τις αλλαγές του.
In the last part, Piano 1 gives the tempo and controls its changes.

148 149 150 151 152 153

Pno. 1

Pno. 2

Pno. 3

Pno. 4

Allegro - poco piu mosso
(♩ c. 126)

154 155 156 157 158 159 160 161

Pno. 1

Allegro - poco piu mosso
(♩ c. 126)

Pno. 2

Allegro - poco piu mosso
(♩ c. 126)

Pno. 3

Allegro - poco piu mosso
(♩ c. 126)

Pno. 4

Vivace - molto piu mosso

(♩ c. 152)

162 163 164 165 166 167 168

Pno. 1

Vivace - molto piu mosso

(♩ c. 152)

Pno. 2

Vivace - molto piu mosso

(♩ c. 152)

Pno. 3

Vivace - molto piu mosso

(♩ c. 152)

Pno. 4

169 170 171 172 173 174 175 176

Pno. 1

Pno. 2

Pno. 3

Pno. 4

Presto - molto piu mosso

(♩ c. 176)

(Το τέμπο αλλάζει στο τρίτο τέταρτο του μέτρου.)
(Tempo changes on the third crochet of the measure.)

177 178 179 180 181 182 183 184

Pno. 1

Presto - molto piu mosso

(♩ c. 176)

(Το τέμπο αλλάζει στο τρίτο τέταρτο του μέτρου.)
(Tempo changes on the third crochet of the measure.)

Pno. 2

Presto - molto piu mosso

(♩ c. 176)

(Το τέμπο αλλάζει στο τρίτο τέταρτο του μέτρου.)
(Tempo changes on the third crochet of the measure.)

Pno. 3

Presto - molto piu mosso

(♩ c. 176)

(Το τέμπο αλλάζει στο τρίτο τέταρτο του μέτρου.)
(Tempo changes on the third crochet of the measure.)

Pno. 4

185 186 187 188 189 190

Pno. 1

Musical notation for Pno. 1, measures 185-190. The notation is in treble clef. Measure 185 starts with a dynamic marking of sf . Measure 186 has a dynamic marking of sfz . Measure 187 has a dynamic marking of sf . Measure 188 has a dynamic marking of sfz . Measure 189 has a dynamic marking of sf . Measure 190 has a dynamic marking of sfz . The notes are mostly chords and eighth notes.

Pno. 2

Musical notation for Pno. 2, measures 185-190. The notation is in treble clef and consists of rests for all measures.

Pno. 3

Musical notation for Pno. 3, measures 185-190. The notation is in treble and bass clefs and consists of rests for all measures.

Pno. 4

Musical notation for Pno. 4, measures 185-190. The notation is in bass clef. Measure 185 starts with a dynamic marking of sf . Measure 186 has a dynamic marking of sfz . Measure 187 has a dynamic marking of sf . Measure 188 has a dynamic marking of sfz . Measure 189 has a dynamic marking of sf . Measure 190 has a dynamic marking of sfz . The notes are mostly chords and eighth notes.

Prestissimo - piu mosso
(♩ c. 200)

(Το τέμπο αλλάζει στο τρίτο τέταρτο του μέτρου.)
(Tempo changes on the third crochet of the measure.)

191 192 193 194 195

Pno. 1

Prestissimo - piu mosso
(♩ c. 200)

(Το τέμπο αλλάζει στο τρίτο τέταρτο του μέτρου.)
(Tempo changes on the third crochet of the measure.)

Pno. 2

Prestissimo - piu mosso
(♩ c. 200)

(Το τέμπο αλλάζει στο τρίτο τέταρτο του μέτρου.)
(Tempo changes on the third crochet of the measure.)

Pno. 3

Λεο.

Prestissimo - piu mosso
(♩ c. 200)

(Το τέμπο αλλάζει στο τρίτο τέταρτο του μέτρου.)
(Tempo changes on the third crochet of the measure.)

Pno. 4

196

197

198

199

200

Pno. 1

Musical notation for Pno. 1, measures 196-200. Two staves with treble clefs and a TAB line below. Each measure contains a single note on the top staff and a corresponding fret number on the TAB line.

Pno. 2

Musical notation for Pno. 2, measures 196-200. Two staves with treble clefs and a TAB line below. Each measure contains a single note on the top staff and a corresponding fret number on the TAB line.

Pno. 3

Musical notation for Pno. 3, measures 196-200. Two staves with treble and bass clefs and a TAB line below. Each measure contains a single note on the top staff and a corresponding fret number on the TAB line.

(Ped.) _____

Pno. 4

Musical notation for Pno. 4, measures 196-200. Two staves with bass clefs and a TAB line below. Each measure contains a single note on the top staff and a corresponding fret number on the TAB line.